

PPP2R2B antibody

Catalog Number: 114100

Product name

PPP2R2B antibody

IP: 1:200-1:2000

IF: 1:10-1:100

Specificity

Human, Mouse, Rat; other species not tested.

Antibody description

PPP2R2B Rabbit Polyclonal antibody. Positive WB detected in SH-SY5Y cells, MCF7 cells. Positive IP detected in SH-SY5Y cells. Positive IF detected in SH-SY5Y cells. Observed molecular weight by Western-blot: 52 kDa

Preparation

This antibody was obtained by immunization of PPP2R2B recombinant protein (Accession Number: NM_181675). Purification method: Antigen affinity purified.

Formulation

PBS with 0.1% sodium azide and 50% glycerol pH 7.3.

Storage

Store at -20°C. DO NOT ALIQUOT

Clonality

Polyclonal

Ig Type

Rabbit IgG

Applications

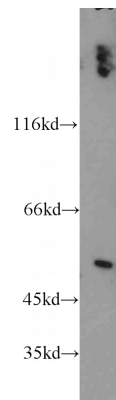
ELISA, WB, IF, IP

Dilutions

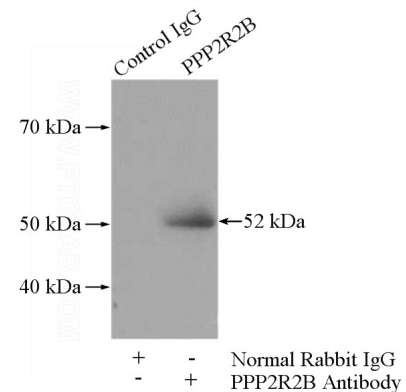
Recommended Dilution:

WB: 1:200-1:2000

Validations

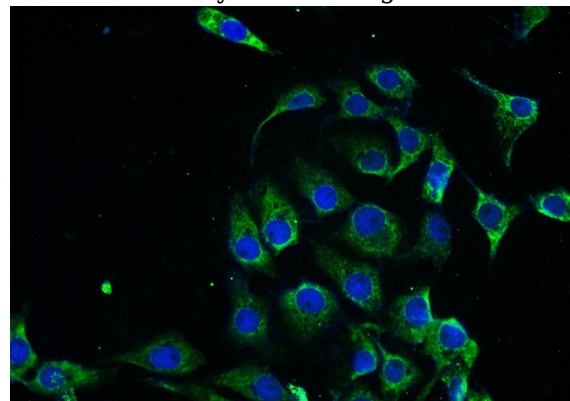


SH-SY5Y cells were subjected to SDS PAGE followed by western blot with Catalog No:114100(PPP2R2B antibody) at dilution of



1:500

IP Result of anti-PPP2R2B (IP:Catalog No:114100, 4ug; Detection:Catalog No:114100 1:500) with SH-SY5Y cells lysate 1200ug.



Immunofluorescent analysis of SH-SY5Y cells

PPP2R2B antibody



Catalog Number: 114100

using Catalog No:114100(PPP2R2B Antibody) at

dilution of 1:25 and Alexa Fluor 488-conjugated
AffiniPure Goat Anti-Rabbit IgG(H+L)