

KLHL28 antibody

Catalog Number: 112100

Product name

KLHL28 antibody

Specificity

Human, Mouse; other species not tested.

Antibody description

KLHL28 Rabbit Polyclonal antibody. Positive WB detected in Jurkat cells, mouse brain tissue. Positive IHC detected in human colon tissue, human liver tissue. Observed molecular weight by Western-blot: 64 kDa

Preparation

This antibody was obtained by immunization of KLHL28 recombinant protein (Accession Number: XM_011536847). Purification method: Antigen affinity purified.

Formulation

PBS with 0.1% sodium azide and 50% glycerol pH 7.3.

Storage

Store at -20°C. DO NOT ALIQUOT

Clonality

Polyclonal

Ig Type

Rabbit IgG

Applications

ELISA, WB, IHC

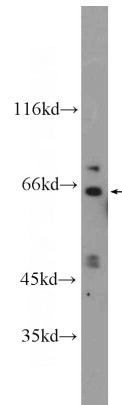
Dilutions

Recommended Dilution:

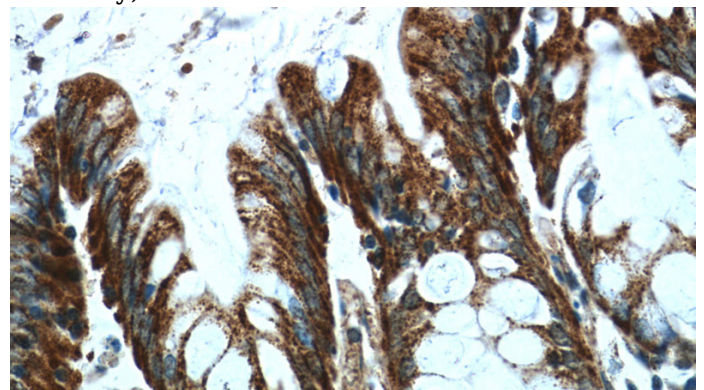
WB: 1:200-1:1000

IHC: 1:20-1:200

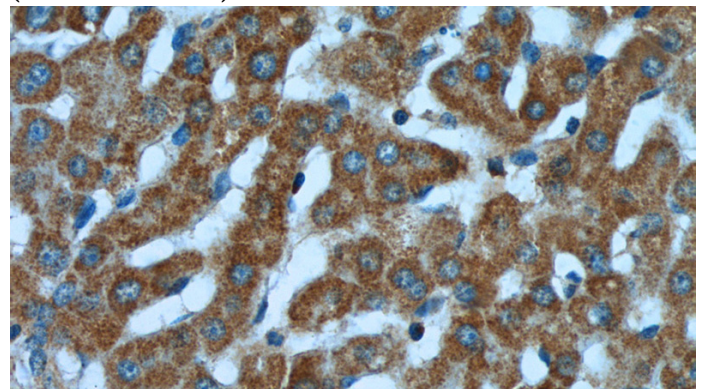
Validations



Jurkat cells were subjected to SDS PAGE followed by western blot with Catalog No:112100(KLHL28 Antibody) at dilution of 1:300



Immunohistochemistry of paraffin-embedded human colon tissue slide using Catalog No:112100(KLHL28 Antibody) at dilution of 1:50 (under 40x lens)



Immunohistochemistry of paraffin-embedded human liver tissue slide using Catalog No:112100(KLHL28 Antibody) at dilution of 1:50

KLHL28 antibody



Catalog Number: 112100

(under 40x lens)