

# Anti-MAP1LC3A Rabbit antibody



Catalog Number: 167800

## Product name

Anti-MAP1LC3A Rabbit antibody

## Specificity

Human, Mouse, Rat

## Antibody description

MAP1LC3A Rabbit monoclonal antibody

## Preparation

Antigen: A synthetic peptide of human MAP1LC3A

## Formulation

50nM Tris-Glycine(pH 7.4), 0.15M NaCl,  
40%Glycerol, 0.01% sodium azide and 0.05% BSA

## Storage

Store at 4°C short term. Store at -20°C long term.  
Avoid freeze / thaw cycle.

## Clonality

Monoclonal

## Ig Type

Rabbit IgG

## Applications

WB, IHC-P, ICC/IF, IP

## Dilutions

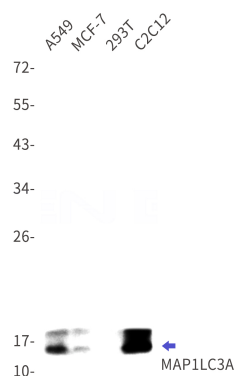
WB: 1/5000

IHC: 1/20

ICC/IF: 1/20

IP: 1/20

## Validations



Western blot detection of MAP1LC3A in A549, MCF-7, 293T, C2C12 cell lysates using MAP1LC3A Rabbit mAb(1:1000 diluted). Predicted band size:14kDa. Observed band size:16kDa.