

# RPB5 antibody



Catalog Number: 114800

## Product name

RPB5 antibody

WB: 1:500-1:5000

IP: 1:200-1:2000

## Specificity

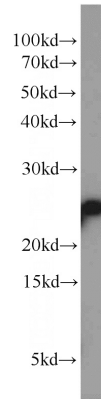
Human, Mouse, Rat; other species not tested.

IHC: 1:20-1:200

## Antibody description

RPB5 Rabbit Polyclonal antibody. Positive IHC detected in human breast cancer tissue. Positive IP detected in HeLa cells. Positive WB detected in Jurkat cells, A549 cells, HeLa cells, HepG2 cells, MCF7 cells, mouse liver tissue, mouse spleen tissue, rat liver tissue, rat spleen tissue. Observed molecular weight by Western-blot: 23-25 kDa

## Validations



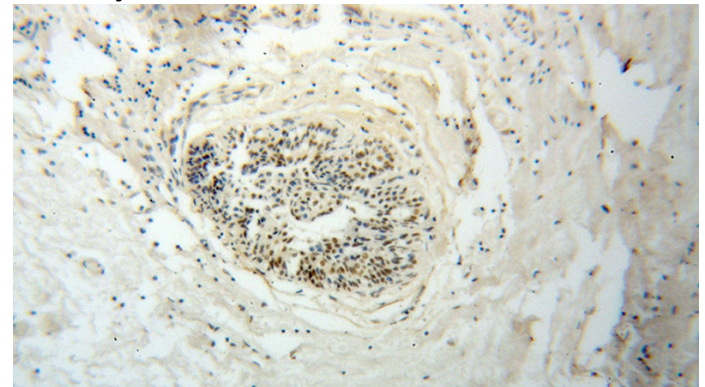
## Preparation

This antibody was obtained by immunization of RPB5 recombinant protein (Accession Number: NM\_002695). Purification method: Antigen affinity purified.

Jurkat cells were subjected to SDS PAGE followed by western blot with Catalog No:114800(POLR2E antibody) at dilution of 1:1000

## Formulation

PBS with 0.02% sodium azide and 50% glycerol pH 7.3.



## Storage

Store at -20°C. DO NOT ALIQUOT

## Clonality

Polyclonal

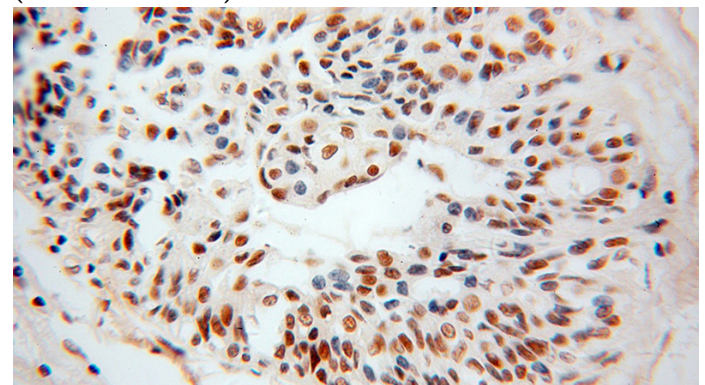
Immunohistochemical of paraffin-embedded human breast cancer using Catalog No:114800(POLR2E antibody) at dilution of 1:100 (under 10x lens)

## Ig Type

Rabbit IgG

## Applications

ELISA, IHC, WB, IP



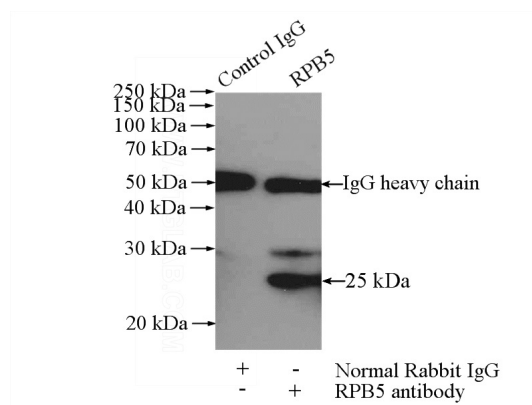
## Dilutions

Recommended Dilution:

# RPB5 antibody

Catalog Number: 114800

Immunohistochemical of paraffin-embedded human breast cancer using Catalog No:114800(POLR2E antibody) at dilution of 1:100 (under 40x lens)



IP Result of anti-RNA Polymerase II (IP:Catalog No:114800, 4ug; Detection:Catalog No:114800 1:500) with HeLa cells lysate 880ug.