

Anti-GSC antibody



Catalog Number: 142800

Product name

Anti-GSC antibody

Specificity

Human GSC

Antibody description

Rabbit Polyclonal to Human GSC

Preparation

Produced in rabbits immunized with a synthetic peptide corresponding to the N-terminus of the Human GSC, and purified by antigen affinity chromatography.

Formulation

0.2 μ m filtered solution in PBS

Storage

This antibody can be stored at 2°C-8°C for one month without detectable loss of activity. Antibody products are stable for twelve months from date of receipt when stored at -20°C to -80°C.

Preservative-Free.

Sodium azide is recommended to avoid contamination (final concentration 0.05%-0.1%). It is toxic to cells and should be disposed of properly. Avoid repeated freeze-thaw cycles.

Clonality

Polyclonal

Ig Type

Rabbit IgG

Applications

WB, ICC/IF, IF, IP

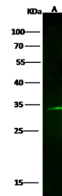
Dilutions

WB: 5-20 μ g/ml

ICC/IF: 0.5-3 μ g/mL

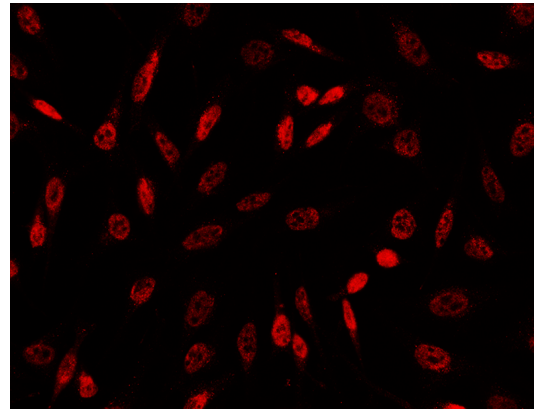
IP: 1-4 μ g/mg of lysate

Validations

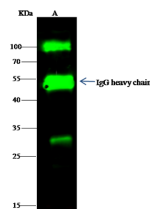


Lanes	A
Items	
Sample (whole cell lysate)	MCF7
Sample Volume (μ g/lane)	30
Gel	13% SDS-PAGE reducing gel
Recommended Concentration	5-20 μ g/ml
Secondary Antibody	Dylight 800-labeled Antibody to Rabbit IgG (H+L), at 1:5000 dilution.
Explanation	Developed using Odyssey imaging system. Predicted band size : 28 kDa Observed band size : 33 kDa

GSC Antibody, Rabbit PAb, Antigen Affinity Purified, Western blot



GSC Antibody, Rabbit PAb, Antigen Affinity Purified, Immunofluorescence



Lanes	A
Items	
Sample (whole cell lysate)	MCF7
Sample quantity	0.5 mg
IP antibody quantity	4 μ g
Immunomagnetic beads Protein G	60 μ g
Gel	13% SDS-PAGE reducing gel
Primary antibody	sigmaA505+sigmaA433 antibody at 10 μ g/ml
Secondary antibody	Dylight 800-labeled antibody to rabbit IgG (H+L), at 1:5000 dilution

GSC Antibody, Rabbit PAb, Antigen Affinity Purified, Immunoprecipitation