

Inhibin beta A-Specific antibody



Catalog Number: 111800

Product name

Inhibin beta A-Specific antibody

Specificity

Human, Mouse, Rat; other species not tested.

Antibody description

Inhibin beta A-Specific Rabbit Polyclonal antibody. Positive IP detected in rat brain tissue. Positive WB detected in mouse brain tissue, PC-3 cells, rat brain tissue. Observed molecular weight by Western-blot: 47 kDa

Preparation

This antibody was obtained by immunization of Peptide (Accession Number: NM_002192). Purification method: Antigen affinity purified.

Formulation

PBS with 0.02% sodium azide and 50% glycerol pH 7.3.

Storage

Store at -20°C. DO NOT ALIQUOT

Clonality

Polyclonal

Ig Type

Rabbit IgG

Applications

ELISA, WB, IP

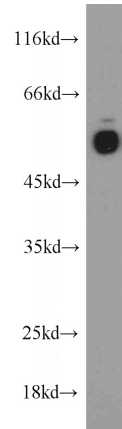
Dilutions

Recommended Dilution:

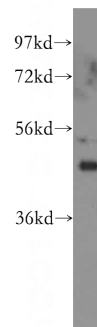
WB: 1:200-1:2000

IP: 1:200-1:2000

Validations

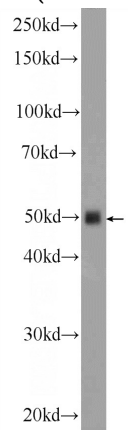


rat brain tissue were subjected to SDS PAGE followed by western blot with Catalog No:111800(INHBA-Specific antibody) at dilution



of 1:300

PC-3 cells were subjected to SDS PAGE followed by western blot with Catalog No:111800(INHBA-



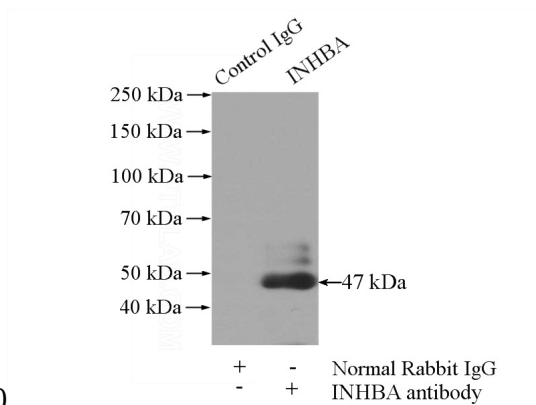
Specific antibody) at dilution of 1:300

mouse brain tissue were subjected to SDS PAGE followed by western blot with Catalog No:111800(INHBA-Specific Antibody) at dilution

Inhibin beta A-Specific antibody



Catalog Number: 111800



IP Result of anti-INHBA-Specific (IP:Catalog No:111800, 4ug; Detection:Catalog No:111800 1:500) with rat brain tissue lysate 4000ug.

of 1:600