

BAAT antibody

Catalog Number: 108400

Product name

BAAT antibody

IHC: 1:20-1:200

IF: 1:10-1:100

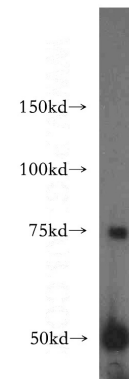
Specificity

Human; other species not tested.

Validations

Antibody description

BAAT Rabbit Polyclonal antibody. Positive IHC detected in human hepat°Cirrhosis tissue. Positive IF detected in HepG2 cells. Positive WB detected in human liver tissue. Observed molecular weight by Western-blot: 50kd



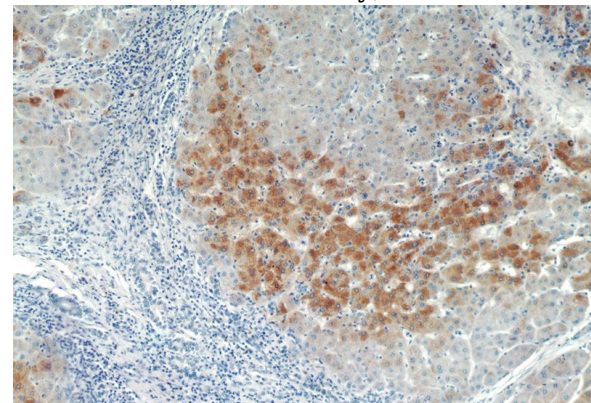
Preparation

This antibody was obtained by immunization of BAAT recombinant protein (Accession Number: NM_001374715). Purification method: Antigen affinity purified.

human liver tissue were subjected to SDS PAGE followed by western blot with Catalog No:108400(BAAT antibody) at dilution of 1:500

Formulation

PBS with 0.02% sodium azide and 50% glycerol pH 7.3.



Storage

Store at -20°C. DO NOT ALIQUOT

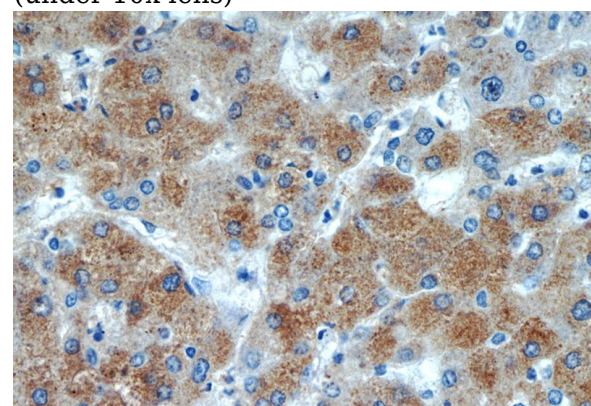
Clonality

Polyclonal

Immunohistochemistry of paraffin-embedded human hepatocirrhosis tissue slide using Catalog No:108400(BAAT Antibody) at dilution of 1:100 (under 10x lens)

Ig Type

Rabbit IgG



Applications

ELISA, WB, IF, IHC

Dilutions

Recommended Dilution:

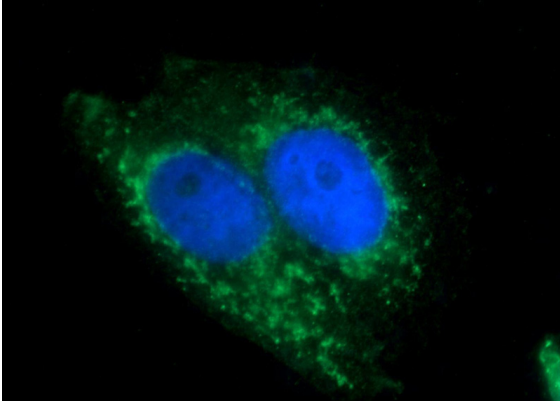
WB: 1:200-1:2000

Immunohistochemistry of paraffin-embedded

BAAT antibody

Catalog Number: 108400

human hepatocirrhosis tissue slide using Catalog No:108400(BAAT Antibody) at dilution of 1:100 (under 40x lens)



Immunofluorescent analysis of HepG2 cells using Catalog No:108400(BAAT Antibody) at dilution of 1:25 and Alexa Fluor 488-conjugated AffiniPure Goat Anti-Rabbit IgG(H+L)