

Human Ephrin-A1/EFNA1 (His Tag) recombinant protein



Catalog Number: 500400

General Information

Gene Name Synonym

EPH-related receptor tyrosine kinase ligand 1; Immediate early response protein B61; Tumor necrosis factor alpha-induced protein 4; Ephrin-A1, secreted form

Protein Construction

A DNA sequence encoding the human Ephrin-A1 (NP_004419.2) without the propeptide (Met 1-Ser182) was expressed, fused with a polyhistidine tag at the C-terminus.

Organism

Human

Expression Host

Human Cells

QC Testing

Activity

Measured by its ability to compete with human EFNA1 for binding to immobilized human EphA2 in a functional ELISA assay.

Purity

> 97 % as determined by SDS-PAGE

Endotoxin

< 1.0 EU per μg of the protein as determined by the LAL method

Stability

Samples are stable for up to twelve months from date of receipt at -70°C

Predicted N terminal

Asp 19

Molecular Mass

The recombinant human Ephrin-A1 comprises 175 amino acids a predicted molecular mass of 20.8 kDa. As a result of glycosylation, rh Ephrin-A1 migrates as an approximately 26 kDa band in SDS-PAGE under reducing conditions.

Formulation

Lyophilized from sterile PBS, pH 7.4

1. 5 % trehalose and mannitol are added as protectants before lyophilization.

2. Please contact us for any concerns or special requirements.

Usage Guide

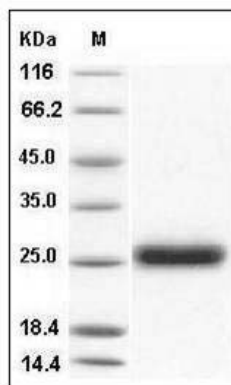
Storage

Store it under sterile conditions at -20°C to -80°C . It is recommended that the protein be aliquoted for optimal storage. Avoid repeated freeze-thaw cycles.

Reconstitution

Adding sterile water, prepare a stock solution of 0.25 mg/ml. Concentration is measured by UV-Vis.

SDS-PAGE



Human Ephrin-A1 / EFNA1 Protein (His Tag) SDS-PAGE