

Anti-Ywhab antibody

Catalog Number: 175000

Product name

Anti-Ywhab antibody

Specificity

Human, Mouse, Rat

Antibody description

Rabbit polyclonal antibody to Ywhab

Preparation

This antigen of this antibody was peptide

Formulation

Liquid, 1*PBS (pH7.4), 0.2% BSA, 40% Glycerol.
Preservative: 0.05% Sodium Azide.

Storage

Store at +4°C after thawing. Aliquot store at -20°C or -80°C. Avoid repeated freeze / thaw cycles.

Clonality

Polyclonal

Ig Type

Rabbit IgG

Applications

WB, ICC, IHC-P

Dilutions

WB: 1:5,000

ICC: 1:200

Validations

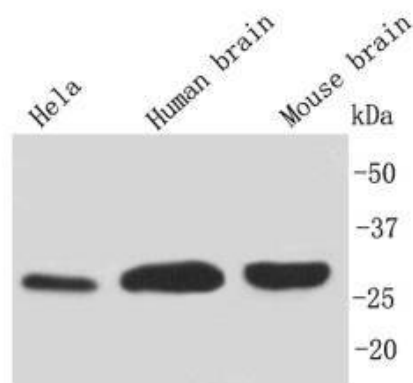


Fig1: Western blot analysis on different cell and tissue using anti-14-3-3 b/a polyclonal antibody.

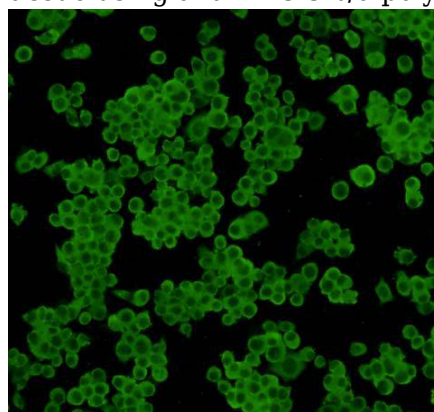


Fig2: ICC staining 14-3-3 b/a in N2A cells (green). Cells were fixed in paraformaldehyde, permeabilised with 0.25% Triton X100/PBS.