

# POLDIP2 antibody



Catalog Number: 114000

## Product name

POLDIP2 antibody

IP: 1:500-1:5000

IF: 1:10-1:100

## Specificity

Human, Mouse, Rat; other species not tested.

## Antibody description

POLDIP2 Rabbit Polyclonal antibody. Positive IP detected in HeLa cells. Positive WB detected in HeLa cells, HepG2 cells, Jurkat cells, K-562 cells. Positive IF detected in HeLa cells. Observed molecular weight by Western-blot: 38 kDa

## Preparation

This antibody was obtained by immunization of POLDIP2 recombinant protein (Accession Number: NM\_015584). Purification method: Antigen affinity purified.

## Formulation

PBS with 0.02% sodium azide and 50% glycerol pH 7.3.

## Storage

Store at -20°C. DO NOT ALIQUOT

## Clonality

Polyclonal

## Ig Type

Rabbit IgG

## Applications

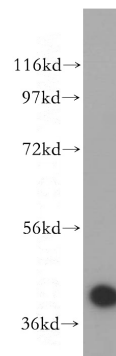
ELISA, WB, IF, IP

## Dilutions

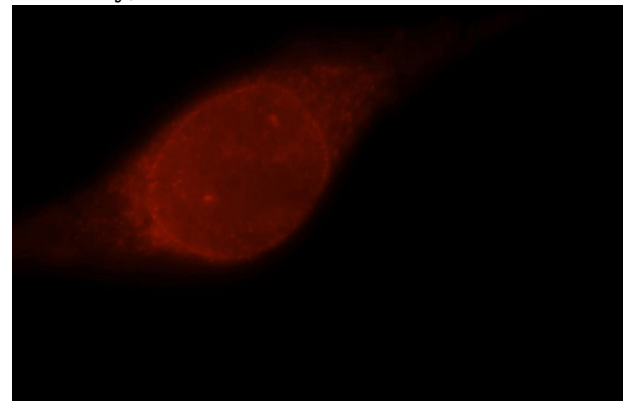
Recommended Dilution:

WB: 1:500-1:5000

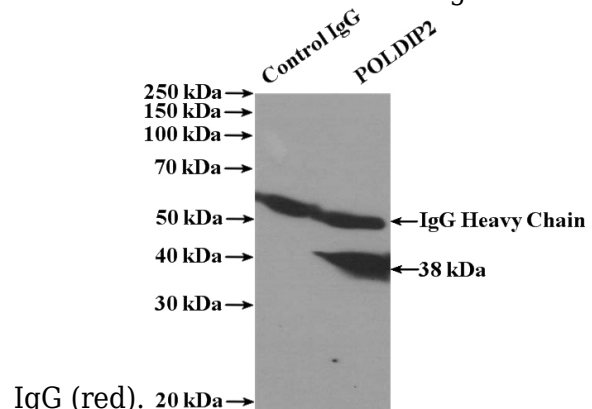
## Validations



HeLa cells were subjected to SDS PAGE followed by western blot with Catalog No:114000(POLDIP2 antibody) at dilution of 1:500



Immunofluorescent analysis of HeLa cells, using POLDIP2 antibody Catalog No:114000 at 1:25 dilution and Rhodamine-labeled goat anti-rabbit



IP Result of anti-POLDIP2 (IP:Catalog No:114000,

# POLDIP2 antibody



Catalog Number: 114000

---

4ug; Detection:Catalog No:114000 1:1000) with HeLa cells lysate 1600ug.