

Anti-PKLR/Pyruvate kinase 1 antibody



Catalog Number: 101000

Product name

Anti-PKLR/Pyruvate kinase 1 antibody

Immunogen

[Human PKLR/Pyruvate kinase 1 \(His Tag\) recombinant protein](#)

Specificity

Human PKLR

Antibody description

Rabbit polyclonal to PKLR/Pyruvate kinase 1

Preparation

Produced in rabbits immunized with purified, recombinant Human PKLR (rh PKLR; NP_000289.1; Leu47-Ser574). PKLR specific IgG was purified by Human PKLR affinity chromatography.

Formulation

0.2 µm filtered solution in PBS

Storage

This antibody can be stored at 2°C-8°C for one month without detectable loss of activity. Antibody products are stable for twelve months from date of receipt when stored at -20°C to -80°C. Preservative-Free.

Sodium azide is recommended to avoid contamination (final concentration 0.05%-0.1%). It is toxic to cells and should be disposed of properly. Avoid repeated freeze-thaw cycles.

Clonality

Polyclonal

Ig Type

Rabbit IgG

Applications

ELISA, IHC-P

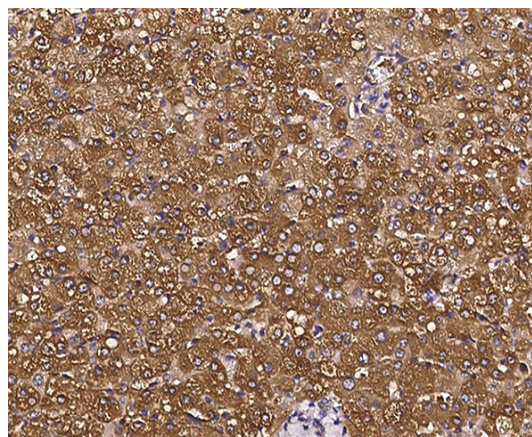
Dilutions

ELISA:0.1-0.2 µg/mL

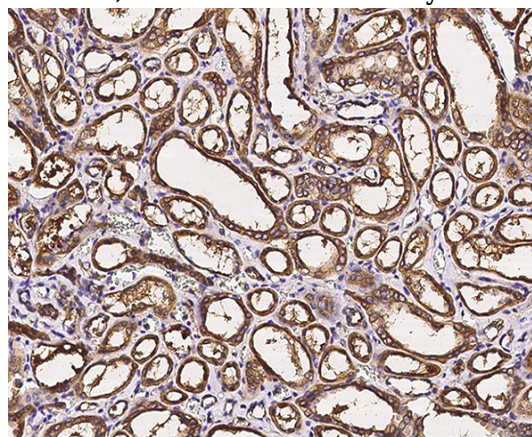
This antibody can be used at 0.1-0.2 µg/mL with the appropriate secondary reagents to detect Human PKLR. The detection limit for Human PKLR is < 0.039 ng/well.

IHC-P: 0.1-2 µg/ml

Validations



PKLR Antibody, Rabbit PAb, Antigen Affinity Purified, Immunohistochemistry

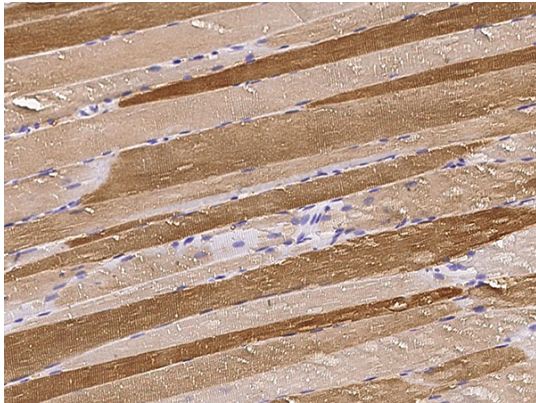


PKLR Antibody, Rabbit PAb, Antigen Affinity Purified, Immunohistochemistry

Anti-PKLR/Pyruvate kinase 1 antibody



Catalog Number: 101000



PKLR Antibody, Rabbit PAb, Antigen Affinity Purified, Immunohistochemistry