

Human SAE1 (His & GST Tag) recombinant protein



Catalog Number: 500000

General Information

Gene Name Synonym

Ubiquitin-like 1-activating enzyme E1A; SUMO-activating enzyme subunit 1, N-terminally processed

Protein Construction

A DNA sequence encoding the human SAE1 (Q9UBE0) (Met1-Lys346) was fused with the N-terminal polyhistidine-tagged GST tag at the N-terminus.

Organism

Human

Expression Host

Baculovirus-Insect Cells

QC Testing

Purity

> 95 % as determined by SDS-PAGE

Endotoxin

Please contact us for more information.

Stability

Samples are stable for up to twelve months from date of receipt at -70°C

Predicted N terminal

Met

Molecular Mass

The recombinant human SAE1 /GST chimera consists of 583 amino acids and has a calculated molecular mass of 66.3 kDa. The recombinant protein migrates as an approximately 61 kDa band in SDS-PAGE under reducing conditions.

Formulation

Lyophilized from sterile 20mM Tris, 500mM NaCl, pH 7.4, 10% gly

1. 5 % trehalose and mannitol are added as protectants before lyophilization.
2. Please contact us for any concerns or special requirements.

Usage Guide

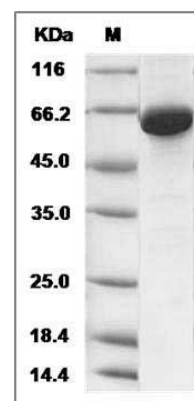
Storage

Store it under sterile conditions at -20°C to -80°C. It is recommended that the protein be aliquoted for optimal storage. Avoid repeated freeze-thaw cycles.

Reconstitution

Adding sterile water, prepare a stock solution of 0.25 mg/ml. Concentration is measured by UV-Vis.

SDS-PAGE



Human SAE1 Protein (His & GST Tag) SDS-PAGE