

General Information

Protein Construction

A DNA sequence encoding the human KRR1 (NP_008974.5) 1-381 aa was fused with the N-terminal GST tag

Organism

Human

Expression Host

E. coli

QC Testing

Activity

Not tested.

Purity

90%, by SDS-PAGE with Coomassie Brilliant Blue staining.

Endotoxin

Please contact the lab for more information.

Stability

Store for up to 12 months at -20°C to -80°C as lyophilized powder.

Formulation

The purified protein was Lyophilized from sterile PBS (58mM Na₂HPO₄, 17mM NaH₂PO₄, 68mM NaCl, pH8.). 5 % trehalose and 5 % mannitol are

added as protectants before lyophilization.

Usage Guide

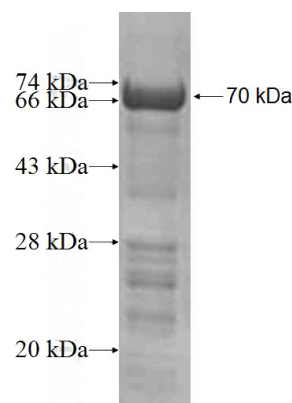
Storage

Store it under sterile conditions at -20°C to -80°C. It is recommended that the protein be aliquoted for optimal storage. Avoid repeated freeze-thaw cycles.

Reconstitution

Reconstitute at 0.25 µg/µl in sterile water for short-term storage. Reconstitution with 50% glycerol solution is recommended for longer term storage (see Stability and Storage for more details). If a different concentration is needed for your purposes please adjust the reconstitution volume as required (please note: the ion concentration of the final solution will vary according to the volume used). Note: Centrifuge vial before opening. When reconstituting, gently pipet and wash down the sides of the vial to ensure full recovery of the protein into solution.

SDS-PAGE



Recombinant Human KRR1 SDS-PAGE