

General Information

Gene Name Synonym:

Protein Construction:

1-47 aa encoded by [NM_004367](#) was inserted into pGEX-4T vector

Source: Human

Expression Host: E coli.

QC Testing

Activity:

Not tested.

Purity:

90%, by SDS-PAGE with Coomassie Brilliant Blue staining.

Endotoxin:

Please contact the lab for more information.

Stability:

Store for up to 12 months at -20°C to -80°C as lyophilized powder.

Predicted N terminal:

Molecular Mass:

Formulation:

The purified protein was Lyophilized from sterile PBS (58mM Na₂HPO₄, 17mM NaH₂PO₄, 68mM

NaCl, pH8.). 5 % trehalose and 5 % mannitol are added as protectants before lyophilization.

Usage Guide

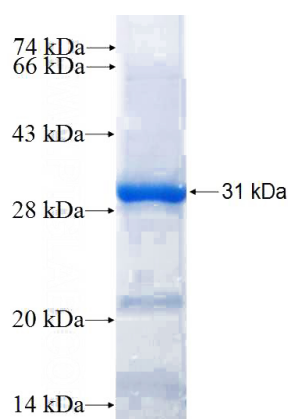
Storage:

Store it under sterile conditions at -20°C to -80°C. It is recommended that the protein be aliquoted for optimal storage. Avoid repeated freeze-thaw cycles.

Reconstitution:

Reconstitute at 0.25 µg/µl in 200 µl sterile water for short-term storage. Reconstitution with 200 µl 50% glycerol solution is recommended for longer term storage (see Stability and Storage for more details). If a different concentration is needed for your purposes please adjust the reconstitution volume as required (please note: the ion concentration of the final solution will vary according to the volume used). Note: Centrifuge vial before opening. When reconstituting, gently pipet and wash down the sides of the vial to ensure full recovery of the protein into solution.

SDS-PAGE:



Recombinant Human CCR6 SDS-PAGE