

# 2019-nCoV Papain-Like Protease



Catalog Number: 521005

## General Information

### Gene Name Synonym

2019-nCoV Papain-Like Protease

### Protein Construction

Target gene encoding Glu1564-Lys1878 was expressed in E.coli

### Organism

Severe acute respiratory syndrome coronavirus 2

### Expression Host

E.coli

## QC Testing

### Activity

Measured by its ability to cleave a fluorogenic peptide substrate, (E-EDANS)RELNGGAPI(K-DABCYL)S (Synthetic).

The specific activity is >2000pmoi/min/mg.

### Purity

>90%

### Endotoxin

<5 EU/mg

### Stability

Samples are stable for up to twelve months from date of receipt at -70°C

### Molecular Mass

35.8kDa

### Formulation

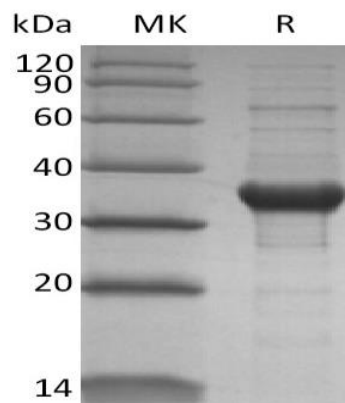
Supplied as a 0.2 µm filtered solution of 20mM Tris-HCl, 10 mM Mercaptoethanol [BME], 20% Glycerol, pH 7.5.

## Usage Guide

### Storage

Store it under sterile conditions at -20°C to -80°C. It is recommended that the protein be aliquoted for optimal storage. Avoid repeated freeze-thaw cycles.

## SDS-PAGE



2019-nCoV Papain-Like Protease