

Human LIF/HILDA recombinant protein



Catalog Number: 519949

General Information

Gene Name Synonym:

Leukemia Inhibitory Factor, LIF, Differentiation-Stimulating Factor, D Factor, Melanoma-Derived LPL Inhibitor, MLPLI, Emfilermin, LIF, HILDA

Protein Construction:

A DNA sequence encoding the Human LIF/HILDA Ser23-Phe202 is expressed.

Source: Human

Expression Host: E.coli

QC Testing

Activity:

Purity:

>95% as determined by SDS-PAGE.

Endotoxin:

<1.0 EU per μg protein as determined by the LAL method.

Stability:

Store for up to 12 months at -20°C to -80°C as lyophilized powder. Aliquots of reconstituted samples are stable at $< -20^{\circ}\text{C}$ for 3 months.

Predicted N terminal:

Molecular Mass:

Formulation:

Lyophilized from a $0.2\ \mu\text{m}$ filtered solution of 20mM PB, 150mM NaCl, 0.02% Tween 20, pH 7.4.

Usage Guide

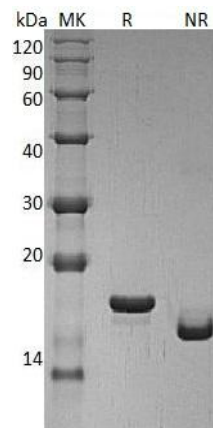
Storage:

Lyophilized protein should be stored at $< -20^{\circ}\text{C}$, though stable at room temperature for 3 weeks. Reconstituted protein solution can be stored at $4-7^{\circ}\text{C}$ for 2-7 days.

Reconstitution:

Always centrifuge tubes before opening. Do not mix by vortex or pipetting. It is not recommended to reconstitute to a concentration less than $100\ \mu\text{g}/\text{ml}$. Dissolve the lyophilized protein in ddH₂O. Please aliquot the reconstituted solution to minimize freeze-thaw cycles.

SDS-PAGE:



Human LIF/HILDA recombinant protein