

Human SUMO3/SMT3A/SMT3H1 recombinant protein



Catalog Number: 519609

General Information

Gene Name Synonym

Small Ubiquitin-Related Modifier 3, SUMO-3, SMT3 Homolog 1, SUMO-2, Ubiquitin-Like Protein SMT3B, Smt3B, SUMO3, SMT3B, SMT3H1

Protein Construction

A DNA sequence encoding the Human SUMO3/SMT3A/SMT3H1 Met1-Phe103 is expressed.

Organism

Human

Expression Host

E.coli

QC Testing

Purity

>95% as determined by SDS-PAGE.

Endotoxin

<1.0 EU per μg protein as determined by the LAL method.

Stability

Store for up to 12 months at -20°C to -80°C as lyophilized powder. Aliquots of reconstituted samples are stable at $< -20^{\circ}\text{C}$ for 3 months.

Formulation

Lyophilized from a $0.2\ \mu\text{m}$ filtered solution of PBS, pH 7.4.

Usage Guide

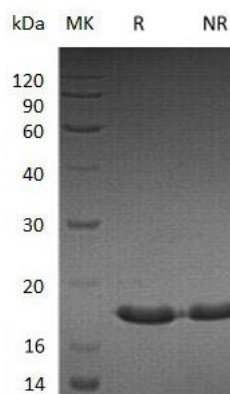
Storage

Lyophilized protein should be stored at $< -20^{\circ}\text{C}$, though stable at room temperature for 3 weeks. Reconstituted protein solution can be stored at $4-7^{\circ}\text{C}$ for 2-7 days.

Reconstitution

Always centrifuge tubes before opening. Do not mix by vortex or pipetting. It is not recommended to reconstitute to a concentration less than $100\ \mu\text{g}/\text{ml}$. Dissolve the lyophilized protein in ddH₂O. Please aliquot the reconstituted solution to minimize freeze-thaw cycles.

SDS-PAGE



Human SUMO3/SMT3A/SMT3H1 recombinant protein