

Human APEX1/APE/APE1/APEX/APX/HAP1/REF1 recombinant protein



Catalog Number: 519593

General Information

Gene Name Synonym

DNA-(Apurinic or Apyrimidinic Site) Lyase, APEX Nuclease, APEN, Apurinic-Apyrimidinic Endonuclease 1, AP Endonuclease 1, APE-1REF-1, Redox Factor-1, APEX1, APE, APE1, APEX, APX, HAP1, REF1

Protein Construction

A DNA sequence encoding the Human APEX1/APE/APE1/APEX/APX/HAP1/REF1 Pro2-Leu318 is expressed.

Organism

Human

Expression Host

E.coli

QC Testing

Purity

>95% as determined by SDS-PAGE.

Endotoxin

<1.0 EU per μg protein as determined by the LAL method.

Stability

Store for up to 6 months at -20°C

Formulation

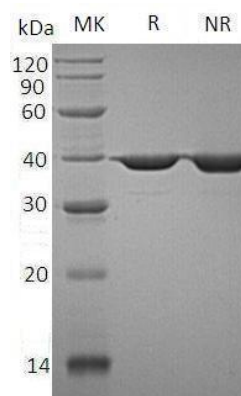
Supplied as a $0.2\ \mu\text{m}$ filtered solution of 10mM HEPES, 100mM KCl, 50% Glycerol, pH 7.4.

Usage Guide

Storage

Store at $<-20^{\circ}\text{C}$, minimize freeze-thaw cycles.

SDS-PAGE



Human APEX1/APE/APE1/APEX/APX/HAP1/REF1 recombinant protein