

General Information

Gene Name Synonym

Prostate-specific antigen [PSA] Gamma-seminoprotein [Kallikrein-3] P-30 antigen [Semenogelase] KLK3 [APS

Protein Construction

A DNA sequence encoding the Human KLK3/APS Ile25-Pro261 is expressed with a 6His tag at the C-terminus.

Organism

Human

Expression Host

Human Cells

QC Testing

Purity

>95% as determined by SDS-PAGE.

Endotoxin

<1.0 EU per µg protein as determined by the LAL

method.

Stability

Store for up to 6 months at -20°C

Formulation

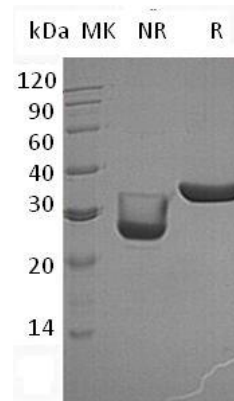
Supplied as a 0.2 µm filtered solution of 20mM TrisHcl, 150mM NaCl, 1mM CaCl₂, pH7.5.

Usage Guide

Storage

Store at <-20°C, minimize freeze-thaw cycles.

SDS-PAGE



Human KLK3/APS (His tag) recombinant protein