

Human CAMK2B/CAM2/CAMK2/CAMKB (His tag) recombinant protein



Catalog Number: 519232

General Information

Gene Name Synonym

Calcium/Calmodulin-Dependent Protein Kinase Type II Subunit Beta, CaM Kinase II Subunit Beta, CaMK-II Subunit Beta, CAMK2B, CAM2, CAMK2, CAMKB

Protein Construction

A DNA sequence encoding the Human CAMK2B/CAM2/CAMK2/CAMKB Met1-Gln503 is expressed with a 6His tag at the C-terminus.

Organism

Human

Expression Host

E.coli

QC Testing

Purity

>95% as determined by SDS-PAGE.

Endotoxin

<1.0 EU per μg protein as determined by the LAL

method.

Stability

Store for up to 6 months at -20°C

Formulation

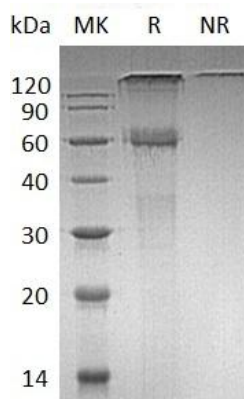
Supplied as a $0.2\ \mu\text{m}$ filtered solution of 10mM HEPES, 150mM NaCl, pH 7.5.

Usage Guide

Storage

Store at $<-20^{\circ}\text{C}$, minimize freeze-thaw cycles.

SDS-PAGE



Human CAMK2B/CAM2/CAMK2/CAMKB (His tag)
recombinant protein