

Human IGF1/IBP1 recombinant protein



Catalog Number: 519201

General Information

Gene Name Synonym

Insulin-Like Growth Factor I, IGF-I, Mechano Growth Factor, MGF, Somatomedin-C, IGF1, IBP1

Protein Construction

A DNA sequence encoding the Human IGF1/IBP1 Gly49-Ala118 is expressed.

Organism

Human

Expression Host

E.coli

QC Testing

Purity

>95% as determined by SDS-PAGE.

Endotoxin

<0.5 EU per μg protein as determined by the LAL method.

Stability

Store for up to 12 months at -20°C to -80°C as lyophilized powder. Aliquots of reconstituted samples are stable at $< -20^{\circ}\text{C}$ for 3 months.

Formulation

Lyophilized from a $0.2 \mu\text{m}$ filtered solution of 300mM HAc-NaAc, pH 6.5.

Usage Guide

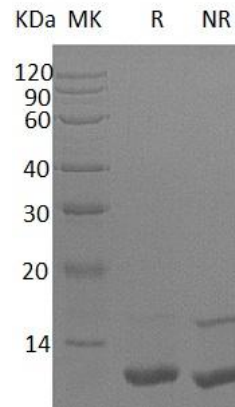
Storage

Lyophilized protein should be stored at $<-20^{\circ}\text{C}$, though stable at room temperature for 3 weeks. Reconstituted protein solution can be stored at $4-7^{\circ}\text{C}$ for 2-7 days.

Reconstitution

Always centrifuge tubes before opening. Do not mix by vortex or pipetting. It is recommended to reconstitute to a concentration of $0.25 \mu\text{g}/\text{ml}$. Dissolve the lyophilized protein in 50mM Acetic acid. Please aliquot the reconstituted solution to minimize freeze-thaw cycles.

SDS-PAGE



Human IGF1/IBP1 recombinant protein