

# Human PSG2/PSBG2 (His tag) recombinant protein



Catalog Number: 519147

## General Information

### Gene Name Synonym

Pregnancy specific beta-1-glycoprotein 2, PSBG2, Pregnancy-specific beta-1 glycoprotein E, pregnancy-specific beta-1-glycoprotein 2, pregnancy-specific beta-1-glycoprotein 7, PSG2

### Protein Construction

A DNA sequence encoding the Human PSG2/PSBG2 Gln35-Thr335 is expressed with a 6His tag at the C-terminus.

### Organism

Human

### Expression Host

Human Cells

## QC Testing

### Purity

>95% as determined by SDS-PAGE.

### Endotoxin

<1.0 EU per  $\mu\text{g}$  protein as determined by the LAL

method.

### Stability

Store for up to 6 months at  $-20^{\circ}\text{C}$

### Formulation

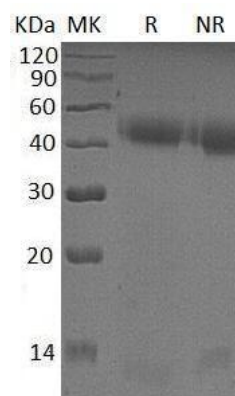
Supplied as a  $0.2\ \mu\text{m}$  filtered solution of 20mM PB, 150mM NaCl, pH 7.4.

## Usage Guide

### Storage

Store at  $<-20^{\circ}\text{C}$ , minimize freeze-thaw cycles.

### SDS-PAGE



Human PSG2/PSBG2 (His tag) recombinant protein