

# Human CELA3A/ELA3/ELA3A (His tag) recombinant protein



Catalog Number: 519100

## General Information

### Gene Name Synonym

Chymotrypsin-Like Elastase Family Member 3A, Elastase IIIA, Elastase-3A, Protease E, CELA3A, ELA3, ELA3A

### Protein Construction

A DNA sequence encoding the Human CELA3A/ELA3/ELA3A Ser16-His270 is expressed with a 6His tag at the C-terminus.

### Organism

Human

### Expression Host

Human Cells

## QC Testing

### Purity

>95% as determined by SDS-PAGE.

### Endotoxin

<1.0 EU per µg protein as determined by the LAL

method.

### Stability

Store for up to 6 months at -20°C

### Formulation

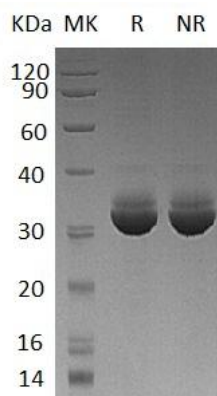
Supplied as a 0.2 µm filtered solution of 20mM TrisHCl, 150mM NaCl, 10% Glycerol, pH7.5.

## Usage Guide

### Storage

Store at <-20°C, minimize freeze-thaw cycles.

### SDS-PAGE



Human CELA3A/ELA3/ELA3A (His tag)  
recombinant protein