

Human PEA15 recombinant protein



Catalog Number: 519002

General Information

Gene Name Synonym

Astrocytic Phosphoprotein PEA-15, 15 kDa
Phosphoprotein Enriched in Astrocytes,
Phosphoprotein Enriched in Diabetes, PED, PEA15

Protein Construction

A DNA sequence encoding the Human PEA15
Met1-Ala130 is expressed.

Organism

Human

Expression Host

E.coli

QC Testing

Purity

>95% as determined by SDS-PAGE.

Endotoxin

<1.0 EU per μ g protein as determined by the LAL
method.

Stability

Store for up to 12 months at -20°C to -80°C as
lyophilized powder. Aliquots of reconstituted
samples are stable at < -20°C for 3 months.

Formulation

Lyophilized from a 0.2 μ m filtered solution of
20mM PB, 150mM NaCl, pH7.4.

Usage Guide

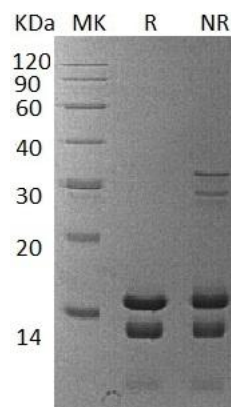
Storage

Lyophilized protein should be stored at <-20°C,
though stable at room temperature for 3 weeks.
Reconstituted protein solution can be stored at
4-7°C for 2-7 days.

Reconstitution

Always centrifuge tubes before opening. Do not
mix by vortex or pipetting. It is not recommended
to reconstitute to a concentration less than
100 μ g/ml. Dissolve the lyophilized protein in
ddH₂O. Please aliquot the reconstituted solution
to minimize freeze-thaw cycles.

SDS-PAGE



Human PEA15 recombinant protein