

# Human CXCL6/GCP2/SCYB6 (His tag) recombinant protein



Catalog Number: 518950

## General Information

### Gene Name Synonym:

C-X-C Motif Chemokine 6, Chemokine Alpha 3, CKA-3, Granulocyte Chemotactic Protein 2, GCP-2, Small-Inducible Cytokine B6, CXCL6, GCP2, SCYB6

### Protein Construction:

A DNA sequence encoding the Human CXCL6/GCP2/SCYB6 Gly38-Asn114 is expressed with a 6His tag at the C-terminus.

**Source:** Human

**Expression Host:** Human Cells

## QC Testing

### Activity:

### Purity:

>95% as determined by SDS-PAGE.

### Endotoxin:

<1.0 EU per  $\mu\text{g}$  protein as determined by the LAL method.

### Stability:

Store for up to 12 months at  $-20^{\circ}\text{C}$  to  $-80^{\circ}\text{C}$  as lyophilized powder. Aliquots of reconstituted samples are stable at  $< -20^{\circ}\text{C}$  for 3 months.

### Predicted N terminal:

## Molecular Mass:

### Formulation:

Lyophilized from a  $0.2 \mu\text{m}$  filtered solution of 20mM PB, 150mM NaCl, 5% Trehalose, pH 7.4.

## Usage Guide

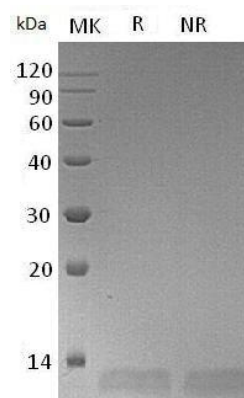
### Storage:

Lyophilized protein should be stored at  $< -20^{\circ}\text{C}$ , though stable at room temperature for 3 weeks. Reconstituted protein solution can be stored at  $4-7^{\circ}\text{C}$  for 2-7 days.

### Reconstitution:

Always centrifuge tubes before opening. Do not mix by vortex or pipetting. It is not recommended to reconstitute to a concentration less than  $100 \mu\text{g}/\text{ml}$ . Dissolve the lyophilized protein in ddH<sub>2</sub>O. Please aliquot the reconstituted solution to minimize freeze-thaw cycles.

## SDS-PAGE:



Human CXCL6/GCP2/SCYB6 (His tag)  
recombinant protein