

# Human PPIL1/CYPL1/CGI-124/UNQ2425 (His tag) recombinant protein



Catalog Number: 518881

## General Information

### Gene Name Synonym

Peptidyl-Prolyl Cis-Trans Isomerase-Like 1,  
PPIase, Rotamase PPIL1, PPIL1, CYPL1

### Protein Construction

A DNA sequence encoding the Human  
PPIL1/CYPL1/CGI-124/UNQ2425 Met1-Gly166 is  
expressed with a 6His tag at the N-terminus.

### Organism

Human

### Expression Host

E. coli

## QC Testing

### Purity

>95% as determined by SDS-PAGE.

### Endotoxin

<1.0 EU per  $\mu\text{g}$  protein as determined by the LAL  
method.

## Stability

Store for up to 6 months at  $-20^{\circ}\text{C}$

## Formulation

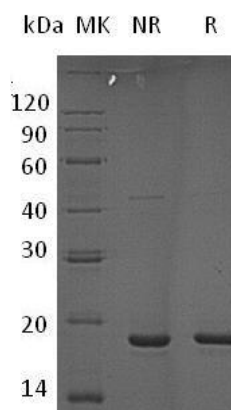
Supplied as a  $0.2\ \mu\text{m}$  filtered solution of 20mM  
TrisHCl, pH 8.0.

## Usage Guide

### Storage

Store at  $<-20^{\circ}\text{C}$ , minimize freeze-thaw cycles.

## SDS-PAGE



Human PPIL1/CYPL1/CGI-124/UNQ2425 (His tag)  
recombinant protein