

Human CD3E/T3E (His tag) recombinant protein



Catalog Number: 518804

General Information

Gene Name Synonym

T-Cell Surface Glycoprotein CD3 Epsilon Chain, T-Cell Surface Antigen T3/Leu-4 Epsilon Chain, CD3e, CD3E, T3E

Protein Construction

A DNA sequence encoding the Human CD3E/T3E Asp23-Asp126 is expressed with a 6His tag at the C-terminus.

Organism

Human

Expression Host

Human Cells

QC Testing

Purity

>95% as determined by SDS-PAGE.

Endotoxin

<1.0 EU per µg protein as determined by the LAL method.

Stability

Store for up to 12 months at -20°C to -80°C as lyophilized powder. Aliquots of reconstituted samples are stable at < -20°C for 3 months.

Formulation

Lyophilized from a 0.2 µm filtered solution of 20mM PB, 150mM NaCl, pH 7.2.

Usage Guide

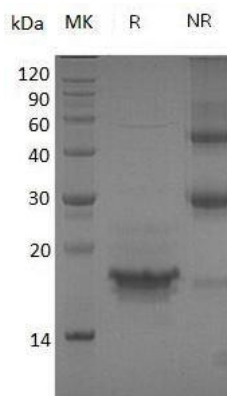
Storage

Lyophilized protein should be stored at <-20°C, though stable at room temperature for 3 weeks. Reconstituted protein solution can be stored at 4-7°C for 2-7 days.

Reconstitution

Always centrifuge tubes before opening. Do not mix by vortex or pipetting. It is not recommended to reconstitute to a concentration less than 100µg/ml. Dissolve the lyophilized protein in ddH₂O. Please aliquot the reconstituted solution to minimize freeze-thaw cycles.

SDS-PAGE



Human CD3E/T3E (His tag) recombinant protein