

Mouse Serpinf1/Pedf/Sdf3 recombinant protein



Catalog Number: 518792

General Information

Gene Name Synonym

Pigment epithelium-derived factor, Pedf, Sdf3, Caspin, Serpin F1, Stromal cell-derived factor 3.

Protein Construction

A DNA sequence encoding the Mouse Serpinf1/Pedf/Sdf3 Asp43-Thr417 is expressed.

Organism

Mouse

Expression Host

E. coli

QC Testing

Purity

>95% as determined by SDS-PAGE.

Endotoxin

<1.0 EU per μ g protein as determined by the LAL

method.

Stability

Store for up to 6 months at -20°C

Formulation

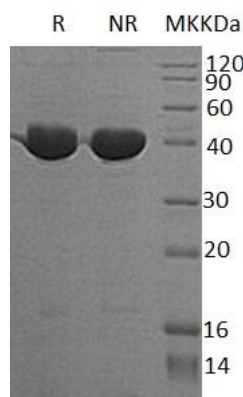
Supplied as a 0.2 μ m filtered solution of 20mM PB \square 150mM NaCl, pH7.4.

Usage Guide

Storage

Store at <-20°C, minimize freeze-thaw cycles.

SDS-PAGE



Mouse Serpinf1/Pedf/Sdf3 recombinant protein