

Human PHLDA2/BWR1C/HLDA2/IPL/TSSC3 (His tag) recombinant protein



Catalog Number: 518703

General Information

Gene Name Synonym

Pleckstrin Homology-Like Domain Family A Member 2, Beckwith-Wiedemann Syndrome Chromosomal Region 1 Candidate Gene C Protein, Imprinted in Placenta and Liver Protein, Tumor-Suppressing STF cDNA 3 Protein, Tumor-Suppressing Subchromosomal Transferable Fragment Candidate Gene 3 Protein, p17-Beckwith-Wiedemann Region 1 C, p17-BWR1C, PHLDA2, BWR1C, HLDA2, IPL, TSSC3

Protein Construction

A DNA sequence encoding the Human PHLDA2/BWR1C/HLDA2/IPL/TSSC3 Met1-Pro152 is expressed with a 6His tag at the C-terminus.

Organism

Human

Expression Host

E.coli

QC Testing

Purity

>95% as determined by SDS-PAGE.

Endotoxin

<1.0 EU per μg protein as determined by the LAL method.

Stability

Store for up to 12 months at -20°C to -80°C as

lyophilized powder. Aliquots of reconstituted samples are stable at $< -20^{\circ}\text{C}$ for 3 months.

Formulation

Lyophilized from a $0.2 \mu\text{m}$ filtered solution of 20mM Tris, 0.1M NaCl, 1mM DTT, pH 8.0.

Usage Guide

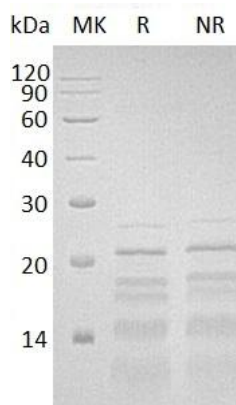
Storage

Lyophilized protein should be stored at $< -20^{\circ}\text{C}$, though stable at room temperature for 3 weeks. Reconstituted protein solution can be stored at $4-7^{\circ}\text{C}$ for 2-7 days.

Reconstitution

Always centrifuge tubes before opening. Do not mix by vortex or pipetting. It is not recommended to reconstitute to a concentration less than $100\mu\text{g/ml}$. Dissolve the lyophilized protein in ddH₂O. Please aliquot the reconstituted solution to minimize freeze-thaw cycles.

SDS-PAGE



Human PHLDA2/BWR1C/HLDA2/IPL/TSSC3 (His tag) recombinant protein