

# Human IL36A/FIL1E/IL1E/IL1F6 recombinant protein



Catalog Number: 518630

## General Information

### Gene Name Synonym:

Interleukin-36 Alpha, FIL1 Epsilon, Interleukin-1 Epsilon, IL-1 Epsilon, Interleukin-1 Family Member 6, IL-1F6, IL36A, FIL1E, IL1E, IL1F6

### Protein Construction:

A DNA sequence encoding the Human IL36A/FIL1E/IL1E/IL1F6 Met1-Phe158 is expressed.

**Source:** Human

**Expression Host:** E.coli

## QC Testing

### Activity:

### Purity:

>95% as determined by SDS-PAGE.

### Endotoxin:

<1.0 EU per  $\mu\text{g}$  protein as determined by the LAL method.

### Stability:

Store for up to 12 months at  $-20^{\circ}\text{C}$  to  $-80^{\circ}\text{C}$  as lyophilized powder. Aliquots of reconstituted samples are stable at  $< -20^{\circ}\text{C}$  for 3 months.

### Predicted N terminal:

### Molecular Mass:

## Formulation:

Lyophilized from a  $0.2\ \mu\text{m}$  filtered solution of 20mM PB, 150mM NaCl, pH 7.2.

## Usage Guide

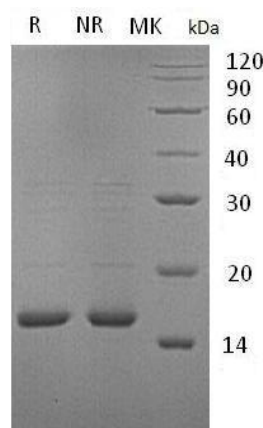
### Storage:

Lyophilized protein should be stored at  $< -20^{\circ}\text{C}$ , though stable at room temperature for 3 weeks. Reconstituted protein solution can be stored at  $4-7^{\circ}\text{C}$  for 2-7 days.

### Reconstitution:

Always centrifuge tubes before opening. Do not mix by vortex or pipetting. It is not recommended to reconstitute to a concentration less than  $100\ \mu\text{g}/\text{ml}$ . Dissolve the lyophilized protein in ddH<sub>2</sub>O. Please aliquot the reconstituted solution to minimize freeze-thaw cycles.

### SDS-PAGE:



Human IL36A/FIL1E/IL1E/IL1F6 recombinant protein