

General Information

Gene Name Synonym

Cytokine receptor common subunit gamma,
Interleukin-2 receptor subunit gamma, gammaC,
P64, CD132 and IL2RG

Protein Construction

A DNA sequence encoding the Human IL2RG
Leu23-Ala262 is expressed with a 6His tag at the
C-terminus.

Organism

Human

Expression Host

Human Cells

QC Testing

Purity

>95% as determined by SDS-PAGE.

Endotoxin

<1.0 EU per µg protein as determined by the LAL
method.

Stability

Store for up to 12 months at -20°C to -80°C as
lyophilized powder. Aliquots of reconstituted
samples are stable at < -20°C for 3 months.

Formulation

Lyophilized from a 0.2 µm filtered solution of PBS,
pH 7.4 .

Usage Guide

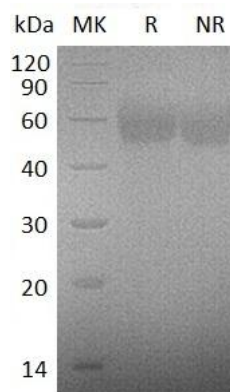
Storage

Lyophilized protein should be stored at <-20°C,
though stable at room temperature for 3 weeks.
Reconstituted protein solution can be stored at
4-7°C for 2-7 days.

Reconstitution

Always centrifuge tubes before opening. Do not
mix by vortex or pipetting. It is not recommended
to reconstitute to a concentration less than
100µg/ml. Dissolve the lyophilized protein in
ddH₂O. Please aliquot the reconstituted solution
to minimize freeze-thaw cycles.

SDS-PAGE



Human IL2RG (Fc & His tag) recombinant protein