

# Human KLKB1/KLK3 (His tag) recombinant protein



Catalog Number: 518384

## General Information

### Gene Name Synonym

Plasma kallikrein  
Fletcher factor  
Kininogenin  
Plasma prekallikrein  
KLKB1  
KLK3

### Protein Construction

A DNA sequence encoding the Human KLKB1/KLK3 Gly20-Ala638 is expressed with a 6His tag at the C-terminus.

### Organism

Human

### Expression Host

Human Cells

## QC Testing

### Purity

>95% as determined by SDS-PAGE.

### Endotoxin

<1.0 EU per µg protein as determined by the LAL

method.

### Stability

Store for up to 6 months at -20°C

### Formulation

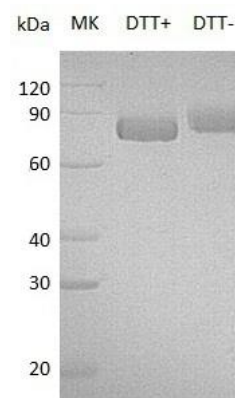
Supplied as a 0.2 µm filtered solution of 20mM TrisHCl, 150mM NaCl, 10% Glycerol, pH8.0.

## Usage Guide

### Storage

Store at <-20°C, minimize freeze-thaw cycles.

### SDS-PAGE



Human KLKB1/KLK3 (His tag) recombinant protein