

Human IDO1/IDO/INDO (His tag) recombinant protein



Catalog Number: 518341

General Information

Gene Name Synonym

Indole 2,3-dioxygenase, Indoleamine 2,3-dioxygenase 1, IDO-1, IDO1, IDO, INDO

Protein Construction

A DNA sequence encoding the Human IDO1/IDO/INDO Met1-Gly403 is expressed with a 6His tag at the N-terminus.

Organism

Human

Expression Host

E.coli

QC Testing

Purity

>95% as determined by SDS-PAGE.

Endotoxin

<1.0 EU per μg protein as determined by the LAL method.

Stability

Store for up to 6 months at -20°C

Formulation

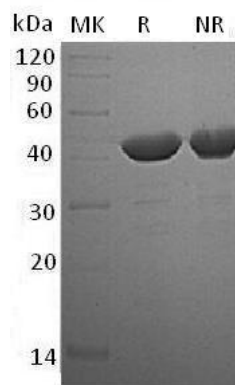
Supplied as a $0.2\ \mu\text{m}$ filtered solution of 20mM Sodium Acetate, 150mM NaCl and 20% Glycerol, pH4.5..

Usage Guide

Storage

Store at $<-20^{\circ}\text{C}$, minimize freeze-thaw cycles.

SDS-PAGE



Human IDO1/IDO/INDO (His tag) recombinant protein