

# Human BCL2L11/BIM (His tag) recombinant protein



Catalog Number: 518324

## General Information

### Gene Name Synonym

Bcl-2-like protein 11; Bcl2-L-11; Bcl2-interacting mediator of cell death; BCL2L11; BIM; BIML

### Protein Construction

A DNA sequence encoding the Human BCL2L11/BIM Met1-Arg120 is expressed with a 6His tag at the N-terminus.

### Organism

Human

### Expression Host

E.coli

## QC Testing

### Purity

>95% as determined by SDS-PAGE.

### Endotoxin

<1.0 EU per  $\mu\text{g}$  protein as determined by the LAL method.

## Stability

Store for up to 6 months at  $-20^{\circ}\text{C}$

## Formulation

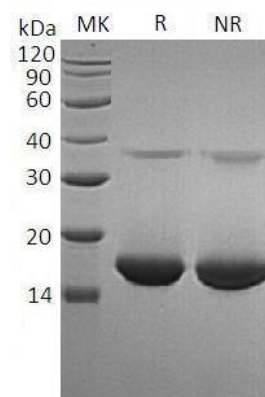
Supplied as a  $0.2\ \mu\text{m}$  filtered solution of 20mM HEPES, 150mM NaCl, 10% glycerol, 2mM DTT, pH8.0

## Usage Guide

### Storage

Store at  $<-20^{\circ}\text{C}$ , minimize freeze-thaw cycles.

## SDS-PAGE



Human BCL2L11/BIM (His tag) recombinant protein