

# Human IL1RL2/IL1RRP2 (His tag) recombinant protein



Catalog Number: 518168

## General Information

### Gene Name Synonym

Interleukin-1 receptor-like 2;IL1RL2;IL-36 receptor;IL-36R;IL-1Rrp2;IL1R-rp2;

### Protein Construction

A DNA sequence encoding the Human IL1RL2/IL1RRP2 Asp20-Tyr337 is expressed with a 6His tag at the C-terminus.

### Organism

Human

### Expression Host

Human Cells

## QC Testing

### Purity

>95% as determined by SDS-PAGE.

### Endotoxin

<1.0 EU per  $\mu\text{g}$  protein as determined by the LAL method.

### Stability

Store for up to 12 months at  $-20^{\circ}\text{C}$  to  $-80^{\circ}\text{C}$  as lyophilized powder. Aliquots of reconstituted samples are stable at  $< -20^{\circ}\text{C}$  for 3 months.

### Formulation

Lyophilized from a  $0.2\ \mu\text{m}$  filtered solution of PBS, pH7.4.

## Usage Guide

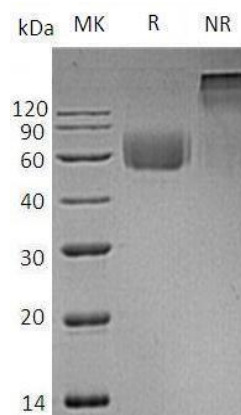
### Storage

Lyophilized protein should be stored at  $<-20^{\circ}\text{C}$ , though stable at room temperature for 3 weeks. Reconstituted protein solution can be stored at  $4-7^{\circ}\text{C}$  for 2-7 days.

### Reconstitution

Always centrifuge tubes before opening. Do not mix by vortex or pipetting. It is not recommended to reconstitute to a concentration less than  $100\ \mu\text{g}/\text{ml}$ . Dissolve the lyophilized protein in ddH<sub>2</sub>O. Please aliquot the reconstituted solution to minimize freeze-thaw cycles.

## SDS-PAGE



Human IL1RL2/IL1RRP2 (His tag) recombinant protein