

Human SEPHS1/SELD/SPS/SPS1 (His tag) recombinant protein



Catalog Number: 518127

General Information

Gene Name Synonym

Selenide, water dikinase 1, Selenium donor protein 1, Selenophosphate synthase 1, SEPHS1, SELD, SPS, SPS1

Protein Construction

A DNA sequence encoding the Human SEPHS1/SELD/SPS/SPS1 Met1-Ser392 is expressed with a 6His tag at the C-terminus.

Organism

Human

Expression Host

Human Cells

QC Testing

Purity

>95% as determined by SDS-PAGE.

Endotoxin

<1.0 EU per µg protein as determined by the LAL

method.

Stability

Store for up to 6 months at -20°C

Formulation

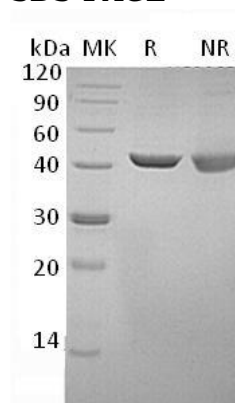
Supplied as a 0.2 µm filtered solution of 25mM Tris.HCl, pH7.3, 100mM glycine, 10% glycerol.

Usage Guide

Storage

Store at <-20°C, minimize freeze-thaw cycles.

SDS-PAGE



Human SEPHS1/SELD/SPS/SPS1 (His tag)
recombinant protein