

General Information

Gene Name Synonym:

Protein Construction:

A DNA sequence encoding the envelope protein of West Nile Virus (WNV) (lineage 2, strain Nea Santa-Greece-2010) (AED99787.1) (Gln586-Ile694) was expressed with a polyhistidine tag at the C-terminus.

Source:WNV

Expression Host:Yeast

QC Testing

Activity:

Purity:

> 95 % as determined by SDS-PAGE.

Endotoxin:

Please contact us for more information.

Stability:

Samples are stable for up to twelve months from date of receipt at -70°C

Predicted N terminal:

Gln 586

Molecular Mass:

The recombinant envelope protein of West Nile Virus (WNV) (lineage 2, strain Nea Santa-Greece-2010) consists of 130 amino acids and predicts a molecular mass of 14 kDa.

Formulation:

Lyophilized from sterile PBS, pH 7.4.

1. Normally 5 % - 8 % trehalose, mannitol and 0.01% Tween80 are added as protectants before lyophilization. Specific concentrations are included in the hardcopy of COA.
2. Please contact us for any concerns or special requirements.

Usage Guide

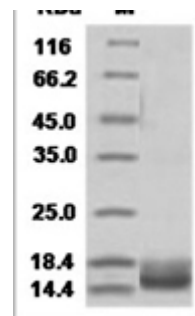
Storage:

Store it under sterile conditions at -20°C to -80°C. It is recommended that the protein be aliquoted for optimal storage. Avoid repeated freeze-thaw cycles.

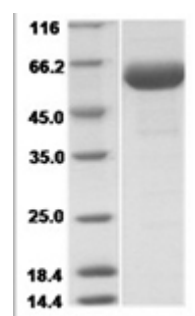
Reconstitution:

A hardcopy of COA with reconstitution instruction is sent along with the products. Please refer to it for detailed information.

SDS-PAGE:



Human WNV-E / Envelope protein Protein 15522



West Nile Virus (WNV) (lineage 2, strain Nea Santa-Greece-2010) E / Envelope Protein (Domain III, His Tag)