

## General Information

### Gene Name Synonym

Enhancing factor; EF; GIIC sPLA2; Group IIA phospholipase A2; Phosphatidylcholine 2-acylhydrolase 2A

### Protein Construction

A DNA sequence encoding the mouse PLA2G2A (NP\_001076000.1) (Asn22-Cys146) was expressed with a polyhistidine tag at the C-terminus.

### Organism

Mouse

### Expression Host

Yeast

## QC Testing

### Purity

> 95 % as determined by SDS-PAGE.

### Endotoxin

Please contact us for more information.

### Stability

Samples are stable for up to twelve months from date of receipt at -70°C

### Predicted N terminal

Asn 22

### Molecular Mass

The recombinant mouse PLA2G2A consists of 135 amino acids and predicts a molecular mass of 15.3 kDa.

### Formulation

Lyophilized from sterile 50 mM NaAC, pH 4.0.  
1. Normally 5 % - 8 % trehalose, mannitol and 0.01% Tween80 are added as protectants before lyophilization. Specific concentrations are included in the hardcopy of COA.  
2. Please contact us for any concerns or special requirements.

## Usage Guide

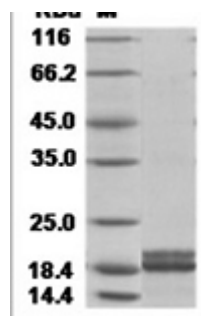
### Storage

Store it under sterile conditions at -20°C to -80°C. It is recommended that the protein be aliquoted for optimal storage. Avoid repeated freeze-thaw cycles.

### Reconstitution

A hardcopy of COA with reconstitution instruction is sent along with the products. Please refer to it for detailed information.

### SDS-PAGE



Mouse PLA2G2A Protein 15467