

Mouse CCL20 recombinant protein (Native)



Catalog Number: 514790

General Information

Gene Name Synonym

Beta-chemokine exodus-1; CC chemokine LARC; CC chemokine ST38; Liver and activation-regulated chemokine; Macrophage inflammatory protein 3 alpha; MIP-3-alpha; Small-inducible cytokine A20

Protein Construction

A DNA sequence encoding the mouse CCL20 (NP_058656.1) (Ala28-Met97) was expressed with an initial Met.

Organism

Mouse

Expression Host

E. coli

QC Testing

Purity

> 95 % as determined by SDS-PAGE.

Endotoxin

Please contact us for more information.

Stability

Samples are stable for up to twelve months from date of receipt at -70°C

Predicted N terminal

Met

Molecular Mass

The recombinant mouse CCL20 consists of 71 amino acids and predicts a molecular mass of 8.1 kDa.

Formulation

Lyophilized from sterile PBS.

1. Normally 5 % - 8 % trehalose, mannitol and 0.01% Tween80 are added as protectants before lyophilization. Specific concentrations are included in the hardcopy of COA.

2. Please contact us for any concerns or special requirements.

Usage Guide

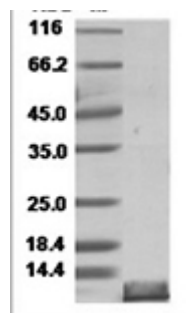
Storage

Store it under sterile conditions at -20°C to -80°C. It is recommended that the protein be aliquoted for optimal storage. Avoid repeated freeze-thaw cycles.

Reconstitution

A hardcopy of COA with reconstitution instruction is sent along with the products. Please refer to it for detailed information.

SDS-PAGE



Mouse CCL20/MIP-3 alpha/MIP3A Protein 15091