

# SARS PLpro recombinant protein (C-His)



Catalog Number: 514771

## General Information

### Protein Construction

A DNA sequence encoding the SARS coronavirus (SARS-CoV) (strain WH20) papain-like protease (PLpro) (AAX16193.1) (Glu1541-Tyr1859) was expressed with a polyhistidine tag at the C-terminus.

### Organism

SARS

### Expression Host

E. coli

## QC Testing

### Purity

> 90 % as determined by SDS-PAGE.

### Endotoxin

Please contact us for more information.

### Stability

Samples are stable for up to twelve months from date of receipt at -70°C

### Predicted N terminal

Glu 1541

### Molecular Mass

The recombinant SARS coronavirus (SARS-CoV) (strain WH20) papain-like protease (PLpro) consists of 319 amino acids and predicts a

molecular mass of 35.8 kDa.

### Formulation

Lyophilized from sterile 50 mM Tris, 0.1 % Tween, pH 9.0.

1. Normally 5 % - 8 % trehalose, mannitol and 0.01% Tween80 are added as protectants before lyophilization. Specific concentrations are included in the hardcopy of COA.
2. Please contact us for any concerns or special requirements.

## Usage Guide

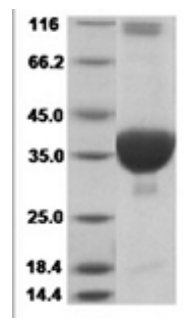
### Storage

Store it under sterile conditions at -20°C to -80°C. It is recommended that the protein be aliquoted for optimal storage. Avoid repeated freeze-thaw cycles.

### Reconstitution

A hardcopy of COA with reconstitution instruction is sent along with the products. Please refer to it for detailed information.

### SDS-PAGE



Plpro / papain-like protease Protein 15094