

## General Information

### Gene Name Synonym

Adhesion molecule in glia; AMOG;  
Sodium/potassium-dependent ATPase subunit  
beta-2

### Protein Construction

A DNA sequence encoding the human ATP1B2 (NP\_001669.3) (Asp68-Thr290) was expressed with a polyhistidine tag at the N-terminus.

### Organism

Human

### Expression Host

Human Cells

## QC Testing

### Purity

> 95 % as determined by SDS-PAGE.

### Endotoxin

< 1.0 EU per  $\mu\text{g}$  protein as determined by the LAL method.

### Stability

Samples are stable for up to twelve months from date of receipt at  $-70^{\circ}\text{C}$

### Predicted N terminal

His

### Molecular Mass

The recombinant human ATP1B2 consists of 242 amino acids and predicts a molecular mass of 27.7 kDa.

### Formulation

Lyophilized from sterile PBS, pH 7.4.

1. Normally 5 % - 8 % trehalose, mannitol and 0.01% Tween80 are added as protectants before lyophilization. Specific concentrations are included in the hardcopy of COA.
2. Please contact us for any concerns or special requirements.

## Usage Guide

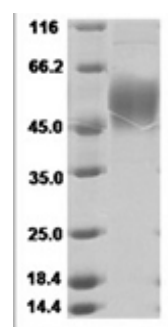
### Storage

Store it under sterile conditions at  $-20^{\circ}\text{C}$  to  $-80^{\circ}\text{C}$ . It is recommended that the protein be aliquoted for optimal storage. Avoid repeated freeze-thaw cycles.

### Reconstitution

A hardcopy of COA with reconstitution instruction is sent along with the products. Please refer to it for detailed information.

### SDS-PAGE



Human ATPase Na<sup>+</sup>/ K<sup>+</sup> beta 2 Protein 15485