

## General Information

### Gene Name Synonym

Notch 2; hN2 [Cleaved into: Notch 2 extracellular truncation; N2ECD; Notch 2 intracellular domain; N2ICD]

### Protein Construction

A DNA sequence encoding the human NOTCH2 (NP\_001186930.1) (Met1-Gln530) was expressed with a polyhistidine tag at the C-terminus.

### Organism

Human

### Expression Host

Baculovirus-Insect Cells

## QC Testing

### Purity

> 95 % as determined by SDS-PAGE.

### Endotoxin

< 1.0 EU per  $\mu\text{g}$  protein as determined by the LAL method.

### Stability

Samples are stable for up to twelve months from date of receipt at  $-70^{\circ}\text{C}$

### Predicted N terminal

Leu 26

### Molecular Mass

The recombinant human NOTCH2 consists of 516 amino acids and predicts a molecular mass of 55.5 kDa.

### Formulation

Lyophilized from sterile 20 mM Tris, 500 mM NaCl, 10 % gly, pH 8.0.

1. Normally 5 % - 8 % trehalose, mannitol and 0.01% Tween80 are added as protectants before lyophilization. Specific concentrations are included in the hardcopy of COA.

2. Please contact us for any concerns or special requirements.

## Usage Guide

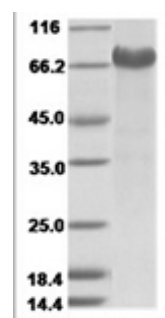
### Storage

Store it under sterile conditions at  $-20^{\circ}\text{C}$  to  $-80^{\circ}\text{C}$ . It is recommended that the protein be aliquoted for optimal storage. Avoid repeated freeze-thaw cycles.

### Reconstitution

A hardcopy of COA with reconstitution instruction is sent along with the products. Please refer to it for detailed information.

### SDS-PAGE



Human Notch-2 Protein 15488