

General Information

Gene Name Synonym

Bcl-2-like protein 5; Bcl2-L-5; Hemopoietic-specific early response protein; Protein BFL-1; Protein GRS

Protein Construction

A DNA sequence encoding the human BCL2A1 (NP_004040) (Met1-Ser152) was expressed with a polyhistidine tag at the N-terminus.

Organism

Human

Expression Host

E. coli

QC Testing

Purity

> 85 % as determined by SDS-PAGE.

Endotoxin

Please contact us for more information.

Stability

Samples are stable for up to twelve months from date of receipt at -70°C

Predicted N terminal

Met 1

Molecular Mass

The recombinant human BCL2A1 consists of 170 amino acids and predicts a molecular mass of 19.7 kDa.

Formulation

Lyophilized from sterile PBS pH 7.4.

1. Normally 5 % - 8 % trehalose, mannitol and 0.01% Tween80 are added as protectants before lyophilization. Specific concentrations are included in the hardcopy of COA.
2. Please contact us for any concerns or special requirements.

Usage Guide

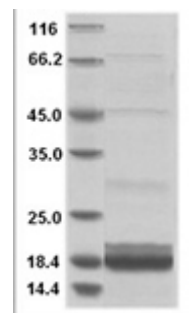
Storage

Store it under sterile conditions at -20°C to -80°C. It is recommended that the protein be aliquoted for optimal storage. Avoid repeated freeze-thaw cycles.

Reconstitution

A hardcopy of COA with reconstitution instruction is sent along with the products. Please refer to it for detailed information.

SDS-PAGE



Human Bcl2A1/Bfl-1 Protein 15494