

# Human HHLA2 recombinant protein (C-human IgG1-Fc)



Catalog Number: 514735

## General Information

### Gene Name Synonym

Human endogenous retrovirus-H long terminal repeat-associating protein 2

### Protein Construction

A DNA sequence encoding the human HHLA2 (NP\_009003.1) (Met1-Asn344) was expressed with the Fc region of human IgG1 at the C-terminus.

### Organism

Human

### Expression Host

Human Cells

## QC Testing

### Activity

5820.00

### Purity

> 90 % as determined by SDS-PAGE.

### Endotoxin

< 1.0 EU per  $\mu\text{g}$  protein as determined by the LAL method.

### Stability

Samples are stable for up to twelve months from date of receipt at  $-70^{\circ}\text{C}$

### Predicted N terminal

Ile 23

## Molecular Mass

The recombinant human HHLA2 consists 560 amino acids and predicts a molecular mass of 63.7 kDa.

### Formulation

Lyophilized from sterile PBS, pH 7.4.

1. Normally 5 % - 8 % trehalose, mannitol and 0.01% Tween80 are added as protectants before lyophilization. Specific concentrations are included in the hardcopy of COA.

2. Please contact us for any concerns or special requirements.

## Usage Guide

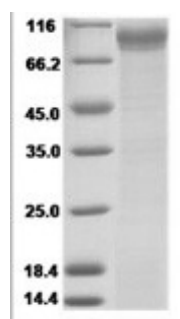
### Storage

Store it under sterile conditions at  $-20^{\circ}\text{C}$  to  $-80^{\circ}\text{C}$ . It is recommended that the protein be aliquoted for optimal storage. Avoid repeated freeze-thaw cycles.

### Reconstitution

A hardcopy of COA with reconstitution instruction is sent along with the products. Please refer to it for detailed information.

## SDS-PAGE



Human B7H7 / HHLA2 Protein (ECD, Fc Tag)