

General Information

Gene Name Synonym

Protein DMR

Protein Construction

A DNA sequence encoding the human WDR20 (XP_054232970.1) 1-88 aa was fused with the polyhistidine tag

Organism

Human

Expression Host

E. coli

QC Testing

Activity

Not tested.

Endotoxin

Please contact the lab for more information.

Stability

Aliquot and store at -20°C to -80°C for up to 6 months. Avoid freeze thaw cycles.

Formulation

1M PBS (58 mM Na₂HPO₄, 17 mM NaH₂PO₄, 68 mM NaCl, pH8.0), added with 300 mM Imidazole and 0.7% sarcosyl, 15% glycerol.

Usage Guide

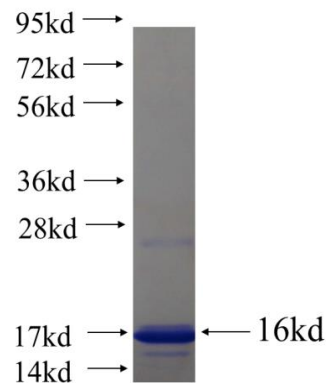
Storage

Store it under sterile conditions at -20°C to -80°C. It is recommended that the protein be aliquoted for optimal storage. Avoid repeated freeze-thaw cycles.

Reconstitution

Reconstitute at 0.25 µg/µl in sterile water for short-term storage. Reconstitution with 50% glycerol solution is recommended for longer term storage (see Stability and Storage for more details). If a different concentration is needed for your purposes please adjust the reconstitution volume as required (please note: the ion concentration of the final solution will vary according to the volume used). Note: Centrifuge vial before opening. When reconstituting, gently pipet and wash down the sides of the vial to ensure full recovery of the protein into solution.

SDS-PAGE



Recombinant human WDR20 SDS-PAGE