

## General Information

### Gene Name Synonym

SF3a60; Spliceosome-associated protein 61; SAP 61

### Protein Construction

A DNA sequence encoding the human SF3A3 (NP\_006793.1) 202-501 aa was fused with the N-terminal GST tag

### Organism

Human

### Expression Host

E. coli

## QC Testing

### Activity

Not tested.

### Endotoxin

Please contact the lab for more information.

### Stability

Aliquot and store at -20°C to -80°C for up to 6 months. Avoid freeze thaw cycles.

### Formulation

PBS (58mM Na<sub>2</sub>HPO<sub>4</sub>, 17mM NaH<sub>2</sub>PO<sub>4</sub>, 68mM NaCl, pH7.4).

## Usage Guide

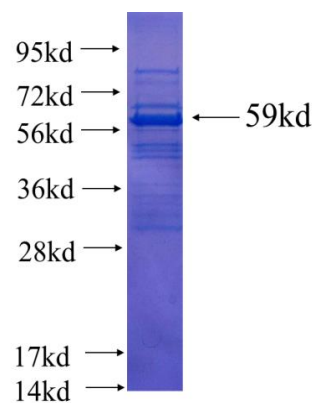
### Storage

Store it under sterile conditions at -20°C to -80°C. It is recommended that the protein be aliquoted for optimal storage. Avoid repeated freeze-thaw cycles.

### Reconstitution

Reconstitute at 0.25 µg/µl in sterile water for short-term storage. Reconstitution with 50% glycerol solution is recommended for longer term storage (see Stability and Storage for more details). If a different concentration is needed for your purposes please adjust the reconstitution volume as required (please note: the ion concentration of the final solution will vary according to the volume used). Note: Centrifuge vial before opening. When reconstituting, gently pipet and wash down the sides of the vial to ensure full recovery of the protein into solution.

### SDS-PAGE



Recombinant human SF3A3 SDS-PAGE