

## General Information

### Gene Name Synonym

Beta-lactamase hcp-like protein; Respiratory chain assembly factor 1; Sel1 repeat-containing protein 1

### Protein Construction

A DNA sequence encoding the human COA7 (NP\_075565.2) 1-231 aa was fused with the polyhistidine tag

### Organism

Human

### Expression Host

E. coli

## QC Testing

### Activity

Not tested.

### Endotoxin

Please contact the lab for more information.

### Stability

Aliquot and store at -20°C to -80°C for up to 6 months. Avoid freeze thaw cycles.

### Formulation

1M PBS (58 mM Na<sub>2</sub>HPO<sub>4</sub>, 17 mM NaH<sub>2</sub>PO<sub>4</sub>, 68 mM NaCl, pH8.0 ), added with 300 mM Imidazole

and 0.7% sarcosyl, 15% glycerol.

## Usage Guide

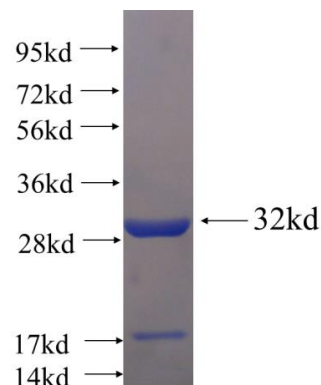
### Storage

Store it under sterile conditions at -20°C to -80°C. It is recommended that the protein be aliquoted for optimal storage. Avoid repeated freeze-thaw cycles.

### Reconstitution

Reconstitute at 0.25 µg/µl in sterile water for short-term storage. Reconstitution with 50% glycerol solution is recommended for longer term storage (see Stability and Storage for more details). If a different concentration is needed for your purposes please adjust the reconstitution volume as required (please note: the ion concentration of the final solution will vary according to the volume used). Note: Centrifuge vial before opening. When reconstituting, gently pipet and wash down the sides of the vial to ensure full recovery of the protein into solution.

## SDS-PAGE



Recombinant human C1orf163 SDS-PAGE