

General Information

Gene Name Synonym

Adaptor protein complex AP-3 subunit beta-2;
Adaptor-related protein complex 3 subunit beta-2;
Beta-3B-adaptin; Clathrin assembly protein
complex 3 beta-2 large chain; Neuron-specific
vesicle coat protein beta-NAP

Protein Construction

A DNA sequence encoding the human AP3B2
(NP_004635.2) 650-1082 aa was fused with the
polyhistidine tag

Organism

Human

Expression Host

E. coli

QC Testing

Activity

Not tested.

Endotoxin

Please contact the lab for more information.

Stability

Store for up to 12 months at -20°C to -80°C as
lyophilized powder.

Formulation

Protein lyophilized in sterile PBS (58 mM
Na₂HPO₄, 17 mM NaH₂PO₄, 68 mM NaCl, 300

mM Imidazole, pH 8.0). Trehalose (5-8%) and
mannitol (5-8%) protectants were added before
lyophilization.

Usage Guide

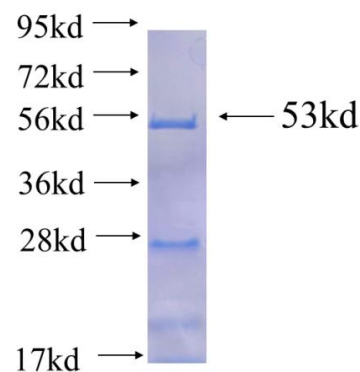
Storage

Store it under sterile conditions at -20°C to -80°C.
It is recommended that the protein be aliquoted
for optimal storage. Avoid repeated freeze-thaw
cycles.

Reconstitution

Reconstitute at 0.25 µg/µl in sterile water for
short-term storage. Reconstitution with 50%
glycerol solution is recommended for longer term
storage (see Stability and Storage for more
details). If a different concentration is needed for
your purposes please adjust the reconstitution
volume as required (please note: the ion
concentration of the final solution will vary
according to the volume used). Note: Centrifuge
vial before opening. When reconstituting, gently
pipet and wash down the sides of the vial to
ensure full recovery of the protein into solution.

SDS-PAGE



Recombinant human AP3B2 SDS-PAGE