

# Canine NRG1 (EGF Domain, Fc Tag) recombinant protein



Catalog Number: 504855

## General Information

### Protein Construction

A DNA sequence encoding the canine NRG1 isoform alpha (XP\_858147.1) EGF-like domain (Ser176-Lys240) was expressed with the Fc region of mouse IgG1 at the N-terminus.

### Organism

Canine

### Expression Host

Human Cells

## QC Testing

### Activity

Measured in a serum-free cell proliferation assay using MCF-7 human breast cancer cells. The ED<sub>50</sub> for this effect is typically 0.1-1 µg/mL.

### Purity

(92.0+7.0) % as determined by SDS-PAGE

### Endotoxin

< 1.0 EU per µg of the protein as determined by the LAL method

### Stability

Samples are stable for up to twelve months from date of receipt at -70°C

### Predicted N terminal

Asp

### Molecular Mass

The recombinant canine NRG1 is a disulfide-linked homodimer. The reduced monomer comprises 301 amino acids and has a predicted molecular mass of 34 kDa. The apparent molecular mass of the protein is approximately 37 and 34 kDa in SDS-PAGE under reducing conditions.

### Formulation

Lyophilized from sterile PBS, pH 7.4.

1. 5 % trehalose and mannitol are added as protectants before lyophilization.

2. Please contact us for any concerns or special requirements.

## Usage Guide

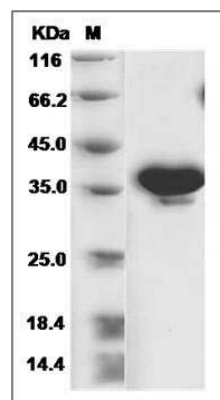
### Storage

Store it under sterile conditions at -20°C to -80°C. It is recommended that the protein be aliquoted for optimal storage. Avoid repeated freeze-thaw cycles.

### Reconstitution

Adding sterile water, prepare a stock solution of 0.25 mg/ml. Concentration is measured by UV-Vis.

### SDS-PAGE



Canine NRG1-alpha Protein (EGF Domain, Fc Tag) SDS-PAGE