

Rhesus ADAM8(CD156) (His Tag) recombinant protein



Catalog Number: 504845

General Information

Protein Construction

A DNA sequence encoding the rhesus ADAM8 (XP_002805919.1) (Met1-Pro497) was expressed with a polyhistidine tag at the C-terminus.

Organism

Rhesus

Expression Host

Human Cells

QC Testing

Activity

Measured by its ability to cleave a fluorogenic peptide substrate Mca-PLAQAV-Dpa-RSSSR-NH₂, R&D Systems, Catalog # ES003.

The specific activity is > 0.5 pmols/min/μg.

Purity

(50.8+34.6) % as determined by SDS-PAGE

Endotoxin

< 1.0 EU per μg of the protein as determined by the LAL method

Stability

Samples are stable for up to twelve months from date of receipt at -70°C

Predicted N terminal

Arg 21

Molecular Mass

The recombinant rhesus ADAM8 comprises 488 amino acids and has a calculated molecular mass of 53.6 KDa.

Formulation

Lyophilized from sterile 12.5mM Tris, 5mM CaCl₂, 75mM NaCl, 50% glycerol.

1. 5 % trehalose and mannitol are added as protectants before lyophilization.

2. Please contact us for any concerns or special requirements.

Usage Guide

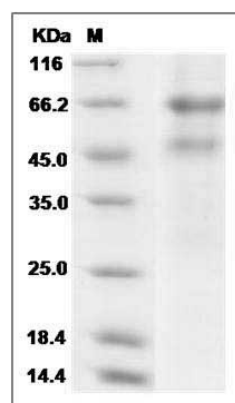
Storage

Store it under sterile conditions at -20°C to -80°C. It is recommended that the protein be aliquoted for optimal storage. Avoid repeated freeze-thaw cycles.

Reconstitution

Adding sterile water, prepare a stock solution of 0.25 mg/ml. Concentration is measured by UV-Vis.

SDS-PAGE



Cynomolgus ADAM8 Protein (His Tag) SDS-PAGE